

## Recovery Program Director

---

*2024 Montana Opioid Abatement Trust  
Grants - 3rd Quarter*

### ***Butte Rescue Mission***

---

Brayton Erickson  
610 E Platinum St  
Butte, MT 59701

grantsmanager@butterescuemotionl.org  
g  
O: 406-782-0925

### ***Jana Roberts***

---

610 E Platinum St  
Butte, MT 59701

grantsmanager@butterescuemotion.org  
O: 509-565-0151

# Application Form

---

## *Region Selection*

---

To collaborate with someone else on this request, click the blue "Collaborate" button in the top-right corner.

### **Project Name\***

Recovery Program Director

### **Select Abatement Region and/or Metro Region\***

Select the Multi-County Abatement Region **and/or** the Metro Region you are requesting grant funds from. Select all regions that apply, for example if you are collaborating with multiple Counties **and/or** Abatement Regions select each region the program/project will serve. Click [HERE](#) for a detailed map of Multi-County Abatement Regions and Metro Abatement Regions

Silver Bow County

## *Application Overview*

---

### **About the Organization/Program\***

Give a brief description of the Organization/Program/Project. Include the mission statement and the services provided.

At Butte Rescue Mission (BRM), we focus on serving homeless families and children, aiming to transform lives and instill hope in our community. With a mission rooted in partnering with Southwest Montana, we provide essential services such as food, clothing, shelter, and restoration through the transformative power of Jesus Christ. With over 45 years of dedicated service, we continue to enhance our offerings to make a lasting impact. We prioritize supporting the most vulnerable members of our community, helping them regain independence and hope for a better future.

Through trusted relationships, we foster hope, empowering our guests to dream and believe in positive change. While addressing emotional, psychological, and physical needs, we also prioritize spiritual growth, recognizing it as key to real transformation.

In our area, there are no other shelters available. The nearest emergency shelter is located in Bozeman. Furthermore, no other facilities or services provide 24/7 staffing for food, shelter, and clothing. Additionally, we offer onsite medical care at various times throughout the week and transportation when necessary.

At Butte Rescue Mission, we focus on serving individuals and families experiencing hardships such as homelessness, food, and clothing insecurities. Additionally, we offer residential recovery services tailored to those struggling with substance use disorder.

## What category does the program fit into\*

Check the category/categories the program fits into. You may select more than one option.

Click [HERE](#) for a list of approved opioid remediation uses

Recovery

## Exhibit E List of Opioid Remediation Uses

*Schedule A - select all that apply*

E. EXPANSION OF WARM HAND-OFF PROGRAMS AND RECOVERY SERVICES

## Exhibit E List of Opioid Remediation Uses

*Schedule B - select all that apply*

B. SUPPORT PEOPLE IN TREATMENT & RECOVERY

## How does the program meet the Opioid Remediation Guidelines\*

In detail, describe how the program fits into the approved Opioid Remediation Guidelines selected in the above question.

*Please be specific*

Butte Rescue Mission (BRM) is seeking to hire a Recovery Program Director to enhance its compliance with the Opioid Remediation Guidelines through the expansion of recovery services. This pivotal role, Recovery Program Director, is essential for providing comprehensive support to individuals and families in Southwestern Montana. BRM offers emergency shelter and sober living environments, establishing a stable foundation for those recovering from opioid addiction. The Mission also provides vital services such as food and clothing, addressing immediate needs, and fostering a supportive environment conducive to recovery.

The Recovery Program Director will collaborate with partner organizations to deliver targeted case management, community-based rehabilitation, financial assistance, housing support, and recovery services. This role ensures a comprehensive approach to the complex challenges of opioid addiction, facilitating a community of support and significantly enhancing the effectiveness of BRM's recovery services. Through this expansion, BRM demonstrates its commitment to comprehensive, compassionate care for those impacted by the opioid crisis.

## New Program or Existing\*

Is the funding intended for a new program or to expand an existing program?

A proposed supplement or expansion to a program.

## *Fiscal Information*

---

### **Requested Amount\***

\$105,000.00

### **Program Budget\***

How will the funds be allocated? Attach a detailed line item budget breakdown for the program. If the funds are intended for a multi-year program please specify the amount budgeted for each year.

Recovery Director Budget.xlsx

### **Multi-Region funding**

If funding is being requested from multiple abatement regions attach a detailed breakdown of amount requested from each region.

### **Multi-Region approval/denial**

Does the application need to be approved by all regions to effectively accomplish it's goals?

No

### **Source of Funding\***

Does the program currently receive funding from another source? If yes, please explain in detail. (i.e. amount, funding source, etc.)

Grant funding is intended for the creation or expansion of opioid prevention, treatment, and recovery projects. The money is **NOT** meant to replace or supplant existing funding.

To address the escalating demand for comprehensive recovery services, Butte Rescue Mission (BRM) is introducing a pivotal new role: the Recovery Program Director. This position is designed to enhance our capacity to support individuals struggling with Opioid Use Disorder (OUD) and co-occurring mental health conditions. As the prevalence of these issues continues to rise, our current resources and approaches require augmentation to provide more effective and integrated care.

The Recovery Program Director will play a critical role in developing and overseeing a holistic recovery program tailored to the complex needs of our clients. This includes coordinating treatment plans that address both substance use and mental health challenges, ensuring a seamless integration of services. The director will be responsible for designing evidence-based interventions, expanding our support network, and enhancing collaboration with local healthcare providers and community organizations.

This role will also focus on implementing best practices in recovery management, monitoring program outcomes, and continuously improving service delivery. By taking a comprehensive approach, the Recovery Program Director will help bridge gaps in care, reduce barriers to recovery, and ultimately contribute to more sustainable outcomes for those we serve.

## Do you have a Fiscal Agent\*

No

## *Multi-Region request funding additional information*

---

### Regional Funding

Please explain in detail the effectiveness of the program, for each region, if not every region approves the application.

In 2023, BRM played a crucial role in supporting the community of Silver Bow County. They provided shelter for 412 individuals, totaling 15,965 shelter nights, and engaged 506 people in various supportive programs. These efforts included assisting 126 individuals in addiction recovery and aiding 24 victims of sex trafficking, underscoring BRM's commitment to addressing complex and urgent social issues.

The Mission also highlighted the vulnerability of families experiencing homelessness by supporting 25 families throughout the year. In a county where 5,415 people live below the Federal Poverty Guidelines, BRM's services are critical but often stretched thin, as evidenced by three tragic hypothermia deaths last year. Despite these challenges, BRM remains dedicated to serving not only the general homeless population but also focusing on vulnerable groups such as those with disabilities, individuals facing mental health challenges, people dealing with food insecurity, and those battling substance use disorders, including Opioid Use Disorder (OUD).

Through a comprehensive approach, BRM continues to address diverse and critical needs within Silver Bow County, striving to provide essential support and pathways to stability for all those in need.

## *Program Abstract*

---

### Program Description\*

Describe the objectives of this project. Provide a detailed overview of the program, including its purpose, priorities & objectives, and intended results.

BRM is steadfastly dedicated to addressing the behavioral health needs of the community, particularly for those in extreme poverty and experiencing homelessness.

The primary purpose of this project is to create a comprehensive, strength-based, and supportive recovery environment. By doing so, the Mission aims to address not only the immediate needs of individuals in crisis but also to provide them with the tools and support necessary for long-term recovery and stability.

Priorities and Objectives

1. A key priority is the hiring of a recovery program director. This professional will offer specialized, individualized care tailored to those struggling with opioid addiction, ensuring that participants receive the best possible support for their specific needs.
2. The project emphasizes employing trained and competent frontline workers. Many of these staff members are Certified Behavioral Health Peer Support Specialists, which ensures that the support system is robust and empathetic, leveraging the lived experiences of individuals who have undergone similar recovery journeys.
3. The Mission collaborates with the state of Montana's Training and Technical Assistance Contractor. This partnership ensures that the services provided are of the highest quality, adhering to best practices and the latest standards in behavioral health care.
4. In 2023, the Mission dedicated 40,499 hours to life advising, programming, and academics. This comprehensive approach ensures that participants receive holistic support, addressing various aspects of their lives, from personal development to educational advancement.

#### Intended Results

1. The intended results of this project are multifaceted. By providing a safe and supportive environment, the Mission aims to:
2. Increase Graduation Rates: Building on the success of having 21 graduates in 2023, the goal is to see more participants successfully complete the recovery program.
3. Enhance Participant Engagement: With 126 active participants, the Mission aims to increase engagement through improved programming and support services.
4. Improve Quality of Life: By offering 40,499 hours of dedicated support, the Mission seeks to significantly enhance the quality of life for its participants, helping them develop the skills and confidence needed to lead independent and fulfilling lives.
5. Reduce Relapse Rates: Through specialized addiction recovery services and comprehensive support services, the project aims to reduce relapse rates among participants, providing them with a stronger foundation for long-term recovery.
6. Strengthen Community Impact: By addressing the behavioral health needs of some of the most vulnerable members of the community, the Mission hopes to create a ripple effect, leading to broader social benefits such as reduced homelessness and improved public health.

## Program Reach

If you are requesting funds from multiple Abatement Regions please specify how your program serves each region. **Be specific.**

In 2023, BRM played a crucial role in supporting the community of Silver Bow County. They provided shelter for 412 individuals, totaling 15,965 shelter nights, and engaged 506 people in various supportive programs. These efforts included assisting 126 individuals in addiction recovery and aiding 24 victims of sex trafficking, underscoring BRM's commitment to addressing complex and urgent social issues.

The Mission also highlighted the vulnerability of families experiencing homelessness by supporting 25 families throughout the year. In a county where 5,415 people live below the Federal Poverty Guidelines, BRM's services are critical but often stretched thin, as evidenced by three tragic hypothermia deaths last year. Despite these challenges, BRM remains dedicated to serving not only the general homeless population but also focusing on vulnerable groups such as those with disabilities, individuals facing mental health challenges, people dealing with food insecurity, and those battling substance use disorders, including Opioid Use Disorder (OUD).

## Specific Goals\*

What are the specific goals of the program? List several goals the program hopes to accomplish and how the program intends to meet these goals.

1. **Increase Graduation Rates:** Achieve a 20% increase in the number of participants successfully completing the recovery program by the end of 2024, aiming for a total of 25 graduates.
2. **Enhance Participant Engagement:** Increase active participant engagement by 15%, measured through regular attendance and participation in support groups and educational workshops.
3. **Improve Quality of Life:** Enhance the overall quality of life for participants, as evidenced by a 25% increase in self-reported satisfaction with living conditions, personal well-being, and social support networks.
4. **Reduce Relapse Rates:** Achieve a 10% reduction in relapse rates among program graduates within the first year of completing the recovery program, emphasizing the importance of ongoing support and post-recovery resources.

Hiring a recovery program director plays a crucial role in meeting the goals set forth by the Butte Rescue Mission:

1. **Increase Graduation Rates:** The recovery program director will facilitate specialized care tailored to each individual's needs, offering evidence-based therapies and personalized treatment plans. This targeted approach can help participants overcome barriers to completing the recovery program, leading to higher graduation rates.
2. **Enhance Participant Engagement:** The recovery program director will facilitate regular one-on-one sessions and group therapy sessions, fostering a supportive environment where participants feel heard and understood. This personalized attention can increase participant engagement and motivation to actively participate in their recovery journey.
3. **Improve Quality of Life:** Through counseling sessions, the recovery program director can address underlying issues contributing to participants' addiction, such as trauma or co-occurring mental health disorders. By providing tools and coping strategies, the counselor empowers participants to improve their overall quality of life and well-being.
4. **Reduce Relapse Rates:** The recovery program director will educate participants about triggers and relapse prevention strategies, equipping them with the skills to maintain sobriety post-program. Ongoing counseling and support can significantly reduce the likelihood of relapse, contributing to long-term recovery success.

## Evaluation Method\*

Describe how you plan to evaluate the effectiveness of the program and what the method for evaluation will be.

To effectively evaluate the impact of hiring a recovery program director and meeting the set goals, the Butte Rescue Mission can employ several evaluation methods:

1. **Quantitative Measures:** Utilize quantitative data to measure specific outcomes, such as graduation rates, participant engagement levels (e.g., attendance records, participation rates in counseling sessions), and relapse rates. This data can be collected through structured surveys, participant records, and statistical analysis to track progress over time.
2. **Qualitative Assessments:** Conduct qualitative assessments to gather in-depth insights into participants' experiences and perceptions. This can include interviews, focus groups, and case studies to understand

qualitative improvements in quality of life, satisfaction with services, and perceived effectiveness of recovery service interventions.

3. Pre-Post Assessments: Implement pre-post assessments to measure changes in participants' behaviors, attitudes, and well-being before and after receiving recovery services. This method allows for direct comparison and evaluation of the recovery program director's impact on participants' recovery outcomes.

4. Feedback Mechanisms: Establish regular feedback mechanisms, such as satisfaction surveys and feedback forms, to gather ongoing input from participants, their families, and staff members regarding the recovery program director's effectiveness, program improvements, and areas for adjustment.

## Data Source\*

What information are you going to collect or use to demonstrate you have accomplished your goals?

The success of this initiative will be evaluated through various metrics, including the number of clients served, the frequency and effectiveness of resource utilization, and feedback from clients regarding their satisfaction and outcomes achieved. Additionally, the organization will track the number of new clients engaged each year to gauge the initiative's impact in reaching previously underserved individuals within the community. Utilizing Mission Tracker, our data tracking software, we will analyze trends in service utilization to make data-driven decisions and adjust our programs and services accordingly. This comprehensive approach ensures that we can demonstrate measurable progress towards our goals, continuously improve our services, and effectively meet the needs of those we serve in the community.

## Awareness\*

How do you plan to create awareness of this program? Briefly describe what action the program plans to take to create awareness in the community.

To increase awareness of our program, the Butte Rescue Mission will implement a multi-faceted outreach strategy aimed at engaging both the community and potential participants. First, we will leverage our existing partnerships with local organizations, faith-based communities, and healthcare providers to disseminate information about our enhanced recovery services, emphasizing the addition of a recovery program director and the comprehensive support available. This outreach will include distributing informational materials, such as brochures and posters, to high-traffic areas and community centers.

## *Additional Documents*

Use this section to upload or explain any additional information regarding the program/organization. ie. a detailed budget projection, program/organization history, etc.

### Upload #1

BRM Fiscal year 2023.pdf



**Upload #2**

**Upload #3**

**Additional Information**

## File Attachment Summary

---

### *Applicant File Uploads*

- Recovery Director Budget.xlsx
- BRM Fiscal year 2023.pdf



## *Project Budget Template*

Eric Holcomb, Governor  
State of Indiana

*Division of Mental Health and Addiction*  
402 W. WASHINGTON STREET, ROOM W353  
INDIANAPOLIS, IN 46204-2739

### Butte Rescue Mission

Budget Summary			
Description	Year 1	Year 2	Justification
Recovery Program Director Salary	\$ 52,500.00	\$ 52,500.00	Recovery Program Director will provide oversight for our current recovery program and expand our ability to care for individuals with OUD and cooccurring mental health conditions.
Fringe Benefits			
Annual Total:	\$ 52,500.00	\$ 52,500.00	
Project Total:	\$ 105,000.00		



## Project Budget Template

Eric Holcomb, Governor  
State of Indiana

*Division of Mental Health and Addiction*  
402 W. WASHINGTON STREET, ROOM W353  
INDIANAPOLIS, IN 46204-2739

### Butte Rescue Mission

Salary:					
	Employee Name	Percent of Grant Funds Requested	Total Salary	Total Salary Funds Requested for Year 1	Justification: Describe the role and responsibilities of each employee position
Recovery Program Director	TBA	100	52,250	\$ 52,250.00	Recovery Program Director will provide oversight for our current recovery program and expand our ability to care for individuals with
				\$ -	
				\$ -	
				\$ -	
				\$ -	
Salary Subtotal:				\$ 52,250.00	

Fringe Benefits:						
Recovery Program Director	Employee Name	Benefits Percent	Percent of Benefits requested	Total Salary	Total Salary Funds Requested for Year 1	Justification: List all components of fringe benefits rate
N/A				\$ -	\$ -	
					\$ -	
					\$ -	
					\$ -	
					\$ -	
Fringe Subtotal:					\$ -	



## *Project Budget Template*

Eric Holcomb, Governor  
State of Indiana

*Division of Mental Health and Addiction*  
402 W. WASHINGTON STREET, ROOM W353  
INDIANAPOLIS, IN 46204-2739

Year One Total:	\$	52,250.00
-----------------	----	-----------



## Project Budget Template

Eric Holcomb, Governor  
State of Indiana

**Division of Mental Health and Addiction**  
402 W. WASHINGTON STREET, ROOM W353  
INDIANAPOLIS, IN 46204-2739

### Butte Rescue Mission

Salary:					
	Employee Name	Percent of Grant Funds Requested	Total Salary	Total Salary Funds Requested for Year 2	Justification: Describe the role and responsibilities of each employee position
Recovery Program Director	TBA	100	52,250	\$ 52,250.00	Recovery Program Director will provide oversight for our current recovery program and expand our ability to care for individuals with
				\$ -	
				\$ -	
				\$ -	
				\$ -	
Salary Subtotal:				\$ 52,250.00	

Fringe Benefits:						
Recovery Program Director	Employee Name	Benefits Percent	Percent of Benefits requested	Total Salary	Total Salary Funds Requested for Year 2	Justification: List all components of fringe benefits rate
					\$ -	
					\$ -	
					\$ -	
					\$ -	
					\$ -	
Fringe Subtotal:					\$ -	

Year Two Total: \$ 52,250.00

# REFUGEE STORIES REF

**BRM ANNUAL REPORT**  
Fiscal year 2023



610 E. PLATINUM STREET BUTTE, MONTANA 59701.  
(406) 782-0925 [WWW.BUTTERESCUSSION.ORG](http://WWW.BUTTERESCUSSION.ORG)

BUTTE RESCUE MISSION,  
610 E. PLATINUM ST,  
BUTTE MT 59701



RESTORING  
HOPE.

*Together.*



Partnering with Southwest Montana to *feed, clothe, shelter, and restore hope* to those in need through the life-changing power of Jesus Christ.

501(C)3 Charitable Nonprofit Organization  
TAX ID # 81-0410116





RESTORING  
HOPE.

*Together.*



CITYGATE  
NETWORK

MINISTRY  
MEMBER

# Table of Contents

---

**A MESSAGE FROM** Pg. 03  
THE EXECUTIVE DIRECTOR

**WHY BRM?** Pg. 05  
OUR APPROACH

**EMERGENCY SHELTER** Pg. 06  
WHY IT WORKS

**THE HARD TRUTH** Pg. 07  
THE REALITY OF SEX TRAFFICKING IN AMERICA

**COMPASSION AT WORK** Pg. 09  
A WORD FROM THE BOARD PRESIDENT

**STREET IMPACT** Pg. 11  
ANDREW'S JOURNEY

**PROFESSIONAL DEVELOPMENT** Pg. 13  
EDUCATING OUR STAFF FOR SUCCESS

**STEWARDSHIP SUMMARY** Pg. 14  
VALUE OF MINISTRY AND FINANCIALS

**2023 AT A GLANCE** Pg. 15  
BUTTE RESCUE MISSION STATISTICS

**CENTER OF HOPE** Pg. 17  
BUTTE RESCUE MISSION CAPITAL CAMPAIGN

**STAY CONNECTED** Pg. 19  
CONTACT US

**VIEWSPARK** Pg. 20  
“BRINGING SUPPORTERS INTO THE INNER CIRCLE.”

**BECAUSE OF YOU** Pg. 21  
MAJOR DONORS AND COMMUNITY PARTNERS

TOP DONORS OF 2023 Pg. 22

# A Story to Tell

## A Message from the Executive Director

Dear Friends,

We have a story to tell. I am thrilled to embark on a journey through the pages of this annual report and I hope that you see your part in the story of 2023. You'll find some of the best stories in the life transformation of each individual that we had the honor of serving last year. Each person has a story and we love the fact that you are a part of their story.



Amidst the narratives of triumph and transformation, each supporter has become an integral part of the success stories that have unfolded in countless lives. Your generosity has been woven into the fabric of our mission, empowering us to extend hope, shelter, and compassion to those in need.

This annual report is more than just a compilation of statistics as we firmly believe numbers are boring. We hope you see the response to the needs in our community and the use of resources supplied to those who are in need, as we help shape the narrative of success for each individual, not a number.

Butte Rescue Mission's success is not an isolated achievement; it is a shared victory, and you play a crucial role in it. Your continued support has enabled us to reach new heights and extend our reach to those in need.

Thank you for being an integral part of the Butte Rescue Mission story. We look forward to unfolding the pages of success together and continuing our shared journey of compassion and impact.

With gratitude,

  
Brayton Erickson

RESTORING HOPE.  
TOGETHER.



# WHY BRM?



## OUR APPROACH

### 4 WALLS OF PROTECTION



**FOOD:** We can not effectively care for anyone unless their basic needs for food are met. The body needs food to survive and many times people come to the Mission in need of the most basic necessities.

**SHELTER:** A warm place to stay the night is essential for a healthy lifestyle. Our climate is harsh and many people will suffer frostbite or worse if unable to find a warm place to stay.

**CLOTHING:** Being equipped with appropriate clothing is crucial for survival. We provide lightly used, clean clothing to anyone in need to keep everyone safely protected from the extreme elements.

**HEALTHCARE:** We work closely with Southwest Montana Community Health Center to help facilitate healthcare providers on-site to give people easy access to the healthcare they need.

### OUR CORE VALUES

Our Vision is to see lives transformed and filled with hope as our community works together to fight homelessness, poverty, and addiction.

Our Mission is to Partner with Southwest Montana to feed, clothe, shelter, and restore hope to those in need through the life-changing power of Jesus Christ.

We help anyone who is struggling with the trials of addiction, abuse, poor health, financial collapse, or any other problem that leads to homelessness the Butte Rescue Mission is here to help anyone in need get back on their feet through teaching and discipling.

*Jesus looked at them and said, "With man this is impossible, but with God all things are possible."*

**MATTHEW 19:26**

# Emergency Shelter

## Why the Low-Barrier is Critical to our Community and those in need.

The Butte Rescue Mission's Low Barrier emergency shelter stands as a vital resource in our community, addressing the pressing needs of individuals experiencing homelessness. With Montana witnessing alarming increases in homelessness, including a staggering 551% rise in chronic patterns of homelessness from 2007 to 2023, the significance of emergency shelters like ours cannot be overstated.

According to the 2023 Annual Homelessness Assessment Report to Congress, Montana also saw the second-largest increase in homeless youth, with a 76% surge from 2022 to 2023. Additionally, the state experienced the second-largest percentage increase in overall homelessness, highlighting the urgent need for support and intervention.

At the Butte Rescue Mission, our Low Barrier emergency shelter serves as the initial point of contact for individuals in crisis, often meeting them at their darkest hour. It's where the rubber meets the road, providing a safe haven and essential services to those who need it most. Despite the challenges they face, including navigating complex social systems and overcoming personal obstacles, many successful journeys have begun at our Low Barrier shelter.

In 2023 alone, we provided 5,976 shelter nights and served 14,118 meals at our Low-Barrier Shelter. These numbers underscore the crucial role our Low Barrier shelter plays in offering immediate assistance and support to individuals experiencing homelessness in our community.

As the number of homeless veterans also sees an unfortunate increase, our commitment to providing comprehensive care remains steadfast. While most states have seen decreases in homeless veterans since 2009, Montana has witnessed an increase, highlighting the need for continued efforts to address the unique challenges faced by this vulnerable population.

In essence, the Butte Rescue Mission's Low Barrier emergency shelter serves as a beacon of hope for those in need, offering a lifeline during times of crisis and uncertainty. It's not just a shelter; it's a place where lives are transformed, and futures are restored. Together, we stand united in our mission to provide compassionate care and support to all members of our community, ensuring that no one is left behind.

## EMERGENCY SHELTER: OUR PHILOSOPHY

### RELATIONSHIP

**Building Trust and Rapport:** Establishing genuine relationships with guests at the emergency shelter lays the foundation for trust and rapport. When individuals feel valued and respected, they are more likely to open up about their challenges, enabling staff to provide tailored support and resources.

### SUPPORTIVE ENVIRONMENT

**Empowerment Through Supportive Environment:** A supportive and nurturing environment fosters a sense of empowerment among guests. By offering encouragement, guidance, and personalized assistance, staff can empower individuals to take proactive steps towards rehabilitation, such as accessing counseling services, job training programs, or addiction recovery support.

### ACCOUNTABILITY

**Encouraging Accountability and Growth:** Through ongoing interactions and mentorship, guests can develop a sense of accountability for their actions and decisions. By setting achievable goals and providing feedback, staff can help individuals track their progress and celebrate milestones, fostering a sense of accomplishment and motivation for continued growth and rehabilitation.



# The Hard Truth

## The Reality of Sex Trafficking in America

In 2022, Butte Rescue Mission Staff, through strategic partnerships with local organizations, successfully intervened in four instances of sex trafficking, ensuring the safe escape of all four victims.

Fast forward to 2023, and the BRM Staff's training & dedication have led to a significant uptick in their impact, with an increase from 4 sex trafficking interventions in 2022 to 24 interventions in 2023. The magnitude of this increase, may initially seem alarming. However, it signifies a heightened awareness and improved capabilities within our team.

The realization dawned upon us in 2022 that human trafficking is an undeniable issue, particularly among the vulnerable communities we serve. Rather than indicating a surge in the crime itself, the spike in numbers reflects our enhanced ability to identify and address the problem. This raised awareness has been instrumental in our approach to combatting human trafficking.

So, how do we contribute to the solution? Through education. The numbers might suggest a surge, but in reality, we have become more adept at recognizing the warning signs and intervening effectively. It's not just about the statistics; it's about the progress we've made in equipping ourselves and our community to tackle this critical issue head-on.

Sharing success stories and the lessons learned in the process can inspire other organizations to take similar steps, contributing to a broader movement to combat human trafficking. The increasing number of interventions means that we are becoming more vigilant and responsive to this critical issue. Ongoing education and collaboration is the key to maintaining and expanding the positive impact in the fight against human trafficking.

### HOW YOU CAN MAKE A DIFFERENCE

1. Volunteer - Make an impact with your time!
2. Donate - Fuel the fight financially!
3. Pray - Intercede for survivors.
4. Learn the Facts - Be equipped with the truth.
5. Spread Awareness - Invite others to join the fight!

# What You Need to Know:

1. **Sex Trafficking happens.** There is a common misconception that trafficking only happens somewhere else. Never in your home town. Never under your nose. Despite the assumptions that traffickers are smuggling their victims out of the country. Instead, they already live here. People who are homeless, undocumented, abused at home, or otherwise vulnerable are at particular risk.

2. **Victims are not usually “locked up.”** Traffickers often try to isolate their victims, sometimes restricting phone access or stealing passports, or other forms of ID. It's also common for them to control their victims' flow of money. Meaning that the victims often don't have access to enough money to leave. Many don't know where they will go or how they will survive if they leave their exploiter.

3. **Traffickers know what they're doing.** They know to target people who are financially and/or emotionally vulnerable. Traffickers target people, who have often already been through trauma and are looking for the love and validation they have not received. Traffickers exploit and gain their victims' trust before coercing them into sex work. After grooming them, traffickers often use other tactics to make their victims feel scared, ashamed and dependent on them for basic physical and emotional needs.

4. **Victims will not out themselves if they just have the chance.** Being trafficked is heavily stigmatized. Health care providers, law enforcement and social workers can't expect victims and survivors to out themselves to people they've just met. It takes time to develop trust before they're willing to open up. Providers and other professionals need to approach young people with compassion and understanding—never judgment. You can help by giving them resources and support to make their own decisions. They are in control.

5. **Survivors are strong, and they heal.** Pity doesn't help survivors. Solidarity does. Survivors are more than their trauma—they are complex individuals just like everyone else, with their own interests, goals and dreams. Healing from trauma is a complicated and difficult process. But it is possible with the support of compassionate communities and resources, survivors not only overcome their past traumas but also thrive.

## COMBAT HUMAN TRAFFICKING THROUGH EDUCATION:



The National Human Trafficking Hotline:

**1-888-373-7888**

visit [safehouseproject.org](https://safehouseproject.org)



**HERCAMPAIGN**  
HER Campaign

**(406) 598-5674**

visit [HERCampaign.org](https://HERCampaign.org)



**THE LIFEGUARD GROUP**

The Montana Human Trafficking Hotline:

**833-406-STOP (7867)**

visit [406stop.com](https://406stop.com) for live chat feature



**I Am On Watch**

Take initiative and get trained.

Teach your friends and coworkers.

YOU can help us fight against Human Trafficking.

Visit [IAmOnWatch.org](https://IAmOnWatch.org) to take your FREE course!



# Compassion at Work

## A Word from the Board President

The ministry of the Butte Rescue Mission is evangelistic, compassionate, and transformational. Through the generosity of our community, men, women, and children are fed, housed, clothed, and treated with dignity, and given hope. Our goal is to equip individuals with the skills they need to re-enter the Butte community as healthy contributors.



The needs of the homeless in our community are ever-changing. Seeing an increase in homeless families, we expanded the number of beds in our family shelter. We are currently working on plans to renovate a warehouse building on our campus that will allow over-flow space for

homeless during extreme weather. Please continue to lift these projects up in prayer.

As you pray, please remember these words from Isaiah 58:7-8: “Share your food with the hungry and give shelter to the homeless. Give clothes to those who need them and do not hide from relatives who need your help. Then your salvation will come like the dawn, and your wounds will quickly heal. Your godliness will lead you forward, and the glory of the LORD will protect you from behind.”

Bill McGladdery

Board President – Butte Rescue Mission



## 2023 BOARD OF DIRECTORS

BILL MCGLADDERY JULIE ENDY DAVE CURRY

DARLENE BATIOLA JON KINZLE SARAH BARRY

GRETCHEN LEIPHHEIMER PAUL BUCKLEY



# Street Impact

## Andrew's Journey

Andrew's journey has been one of remarkable transformation. Once caught in the grip of severe alcohol addiction, Andrew hit rock bottom, losing everything dear to him — family relationships, friendships, housing, and financial stability. He found himself at the Butte Rescue Mission, where his first stay at the emergency shelter marked the beginning of a new chapter.

Despite feeling resigned to the belief that alcohol would consume him, Andrew's resilience shone through as he embarked on a path of recovery. He tried various treatment centers and sober living houses, but it wasn't until he entered the Men's Restorative Program that he found hope.

Andrew's journey to sobriety wasn't without its challenges. Despite setbacks, including being caught drinking during the program, Andrew persevered. His commitment to change was evident as he volunteered his time, cleaned the shelter, and engaged in activities to keep himself occupied and away from alcohol.

Through the support of the Butte Rescue Mission, Andrew not only found sobriety but also gained valuable life skills. He was hired by the mission and excelled in his role as a Shelter Coordinator, demonstrating proficiency and dedication. With guidance, Andrew learned financial responsibility, saving enough to secure his own apartment and even plan for a vehicle.

Today, Andrew remains deeply involved in his community, working full-time at the mission as a Shelter Coordinator. His journey has taught him empathy, resilience, and the importance of faith. He credits his success to his personal relationship with Jesus Christ and is actively involved in Celebrate Recovery, marking significant milestones in his journey to sobriety.

Andrew's story serves as a testament to the power of transformation and the unwavering support of organizations like the Butte Rescue Mission. His experience has not only changed his life but also equipped him with the tools to support others facing similar struggles, making him a source of inspiration in Butte, Montana.

THE BUTTE RESCUE MISSION SAVED  
MY LIFE. MY ALCOHOLISM COST ME  
EVERYTHING. THE MISSION RESTORED  
A HOPE WITHIN MYSELF I THOUGHT  
WAS GONE.

-Andrew  
Former Guest





# Professional Development

*"In 2023, we made it a priority to educate our staff in as many relevant areas as possible. It is through education that we are able to advocate and care for those most vulnerable in our community."*

*Brayton Erickson - Executive Director*

## ■ Reasonable Suspicion Certification for Supervisors

### *Associated Employers*

Here we learn how to identify the signs, symptoms and effects of alcohol or controlled substance use. Get educated on proper documentation techniques. Best practices on how to deal with difficult situations.

## ■ Emerging Leaders

### *CityGate Network*

A sub group of the larger CityGate Network, specifically created to connect young professionals in the network year round to support, encourage, and inspire one another.

## ■ Low-Barrier Shelter Models for People who Use Drugs

### *HHRC Substance Abuse and Mental Health Services Administration*

Attendees learned about different models for providing low-barrier shelter access for people who use drugs and had the opportunity to hear from people about their own experiences staying in low-barrier shelter programs.

## ■ Naloxone Master Trainer

### *Montana Best Practice Medicine*

Completion of the Naloxone Master Trainer program authorizes individuals to conduct Naloxone Training for those eligible for liability protections when administering Naloxone.

## ■ Human Trafficking Identification Training

### *OnWatch*

Learning how to recognize the signs of Sex Trafficking. OnWatch is a survivor-led training designed to empower you to spot, report, and prevent sex trafficking where you live, work, and play. Through true survivor experiences, industry experts explain the key indicators of trafficking, as well as how you can support a survivor's path to freedom.

## ■ HIV and Communicable Disease Training

### *BSB Health Department*

This program has the duty to enhance and protect public health in the event of a communicable disease outbreak.

- Coordinates with local, state, and federal health professionals.
- Provides passive and active surveillance throughout the community.
- Coordinates the Butte-Silver Bow Communicable Disease Epi-Team.
- Ensures HIPAA rules and regulations are followed.

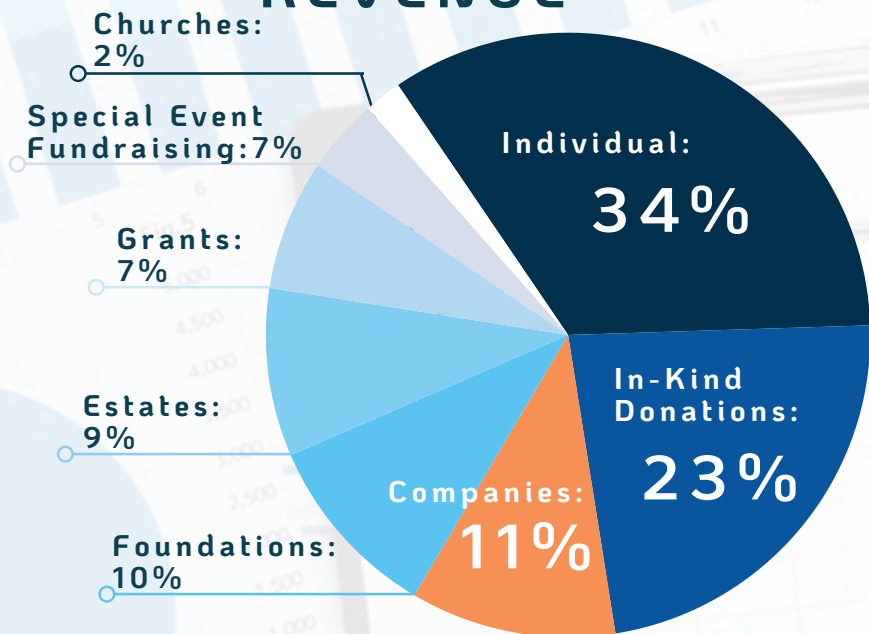
## ■ Importance of Sabbath Spiritual Care

### *Lead by Local Pastors*

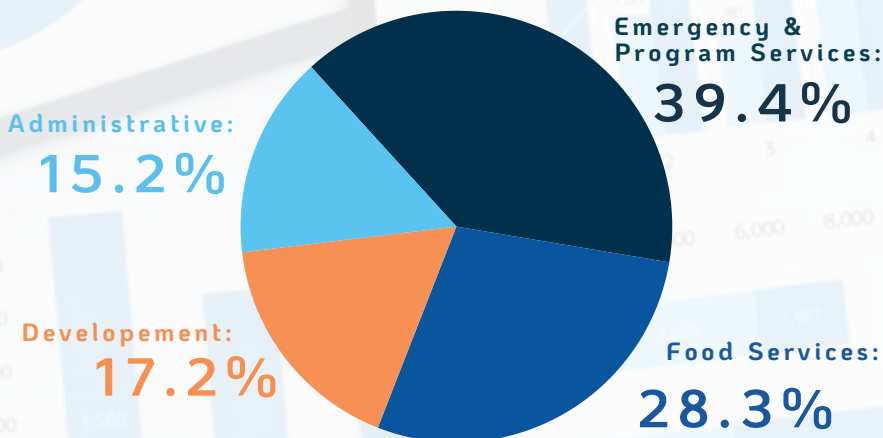
# Stewardship Summary

Value of Ministry and Financials

## REVENUE



## EXPENDITURES





# 2023 AT A GLANCE

## Butte Rescue Mission Statistics



**15,965**  
Nights of Shelter

412 Individuals received Shelter

506 Guests receiving a Service



**90,536**  
Meals Served

125,041.98 LBS of food donated



**21**

Graduations

126 Restoration Program Participants

40,499 Hours of Life Advising, Programming, & Academics



**25**

Families kept off the Street

7 Family Reunifications

17 Children kept off the Street



**36**

Received Permanent Housing

49 Gained sustainable employment

33 Proclamations of Faith



**24**

Sex trafficking Interventions

57 Guests obtained Addiction Recovery Services

32 Guests Sustained Sobriety



# A Look at Our Year





# Center of Hope

## Butte Rescue Mission Capital Campaign

This project is built upon meeting emerging needs within Montana like critical lack of housing and food for those in financial crisis in a post-pandemic economic environment. Like many communities throughout our state Butte is experiencing a housing crisis with less than 5 rental properties and fewer than 100 homes for sale. This is unprecedented and even those who have good jobs are losing their homes to landlords who have decided to sell. Many of these men, women and children are coming to the mission everyday as they try to navigate this crisis. Many have jobs. Many have friends and family who are in the same situation.

The demand for the Butte Rescue Missions services continue to increase every day. We have to do something to help meet the needs of our community. Converting the spacious 10,000 square foot storage building on our campus will vastly increase our facilities.

## Meeting the needs of our Community

The Butte Rescue Mission has been granted the funding necessary to finally break ground on the Center of Hope for vital improvements to our main campus. The goal of this capacity building is to serve more food in a safe environment, expand our free healthcare for the homeless to include mental health services, and create space for cold weather overflow for our emergency shelter in the winter months.

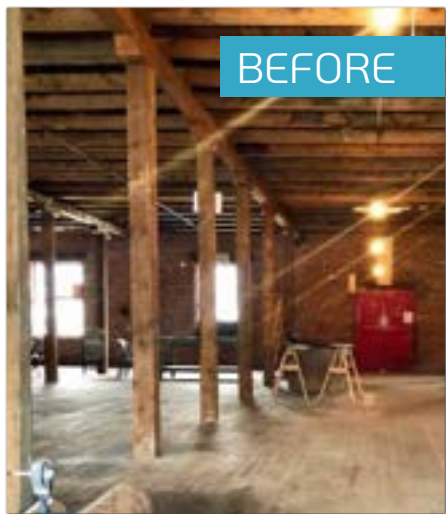
In 2023 the Butte Rescue Mission served 90,536 meals to 506 unique visitors. We also offered 15,965 nights shelter to those in need. In 2023 we have served 13,053 more meals YTD over 2022. The need for our services is ever increasing and we feel that the time is now to prepare for the coming economic crisis borne by the issues our nation has faced over the past several years.



- **Moving administrative offices out of the women's shelter and into The Center of Hope which will expand the capacity family shelter by 5 rooms.**
- **Additional 1300 sq ft of dining hall space will a double food service capacity.**
- **Private counseling rooms and expanded space for free Healthcare for the Homeless.**
- **Expansion of our chapel services to include those who stay at our emergency shelter.**
- **Dining hall to double as cold weather overflow in the winter months.**



AFTER



BEFORE

**"For I was hungry and you gave me food, I was thirsty and you gave me drink, I was a stranger and you welcomed me."**

**Matthew 25:35**



AFTER

# Stay Connected



(406) 782-0925



[www.butterescuemission.org](http://www.butterescuemission.org)



[brm@butterescuemission.org](mailto:brm@butterescuemission.org)



[/butterescuemission](https://www.facebook.com/butterescuemission)



[@butterescuemission](https://www.instagram.com/butterescuemission)



[butterescuemission.viewspark.org/subscribe](http://butterescuemission.viewspark.org/subscribe)

*"Partnering with Southwest Montana to feed, clothe, shelter, and restore hope to those in need, through the life-changing power of Jesus Christ."*



Since 1976



# ViewSPARK

Butte Rescue Mission recently teamed up with ViewSpark in order to stay better connected with our friends and followers.

ViewSpark is a platform that allows nonprofits like BRM to capture and share real-time content. We can take a photo or video lunch at the mission, write a short message, and immediately share it with supporters like you. This raw, real content gives a behind-the-scenes look at exactly what is happening at the Mission in that moment.

You will also, have the opportunity to directly respond to the text message allowing for better communication between us and further building relationships with our friends and neighbors in our community.

## “Bringing supporters into the inner circle.”



Scan the QR Code to sign up and watch past ViewSpark videos.

[butterescuemission.viewspark.org/subscribe](https://butterescuemission.viewspark.org/subscribe)

# You Are Part of Our Story

Major Donors & Community Partners



CHARITABLE FOUNDATION



DENNIS & PHYLLIS  
WASHINGTON  
FOUNDATION



Butte Emergency  
Food Bank





# Because of You

## Top Donors of 2023

3 Rivers Worship Center - Abundant Life Fellowship - Adams Family Foundation  
Albertsons Companies Foundation - John & Geri Alexander - Allan Skogen Marketing  
Gerald Allen - American Legion Silver Bow - Charles & Eleanor Arbaugh Dave & Gail  
Barney - Darlene Battaiola - Frank Baril - Marty & Leslie Bennett - Daniel T. Berube  
Trust - Robert & Deborah Brown - Patti & Jim Burt - Butte's Ace Hardware - Butte  
Builders - Butte Community Bible Church - Butte Rotary - Phil & Mary Kay Cammack  
- Church in the Valley - City Hall Professionals - Kimberly Cimbalista - Clearwater  
Credit Union - Mike Clements - Compass Property Solutions - Patrick & Linda Connors  
- Costco Workplace Giving - Crafted Aesthetics Inc - Karen Crockett - Colin & Julia  
Crook - Veronica Dahlman - Daniel Financial Services - Kathy & Edward Davig -  
Dennis & Phyllis Washington Foundation - James A & Mary K Driscoll - Denny  
Menholt Ford - Denver Mattress - Dennis Dietrich & Kimra Johnston - Michael & Cathy  
Dubois - Kimberly Dunbar - Jim & Holly Dyk - Mary Ann Dyk - Marvin & Deb Erickson  
- Exchange Club Foundation - Tim & Rose Fellows - Joseph Fleming - Victor & Phaedra  
Forsman - Vince & Vicky Forsman - Cathy Friel - Leroy & Pat Friel - Frontstream -  
Robert Fryer - Robert & Judith Gallagher - Tim & Marie Garrison - D. Giacomino -  
Gianforte Family Foundation - James and Chloe Gilman Foundation - Glacier Bancorp,  
Inc - Gloria Dei Lutheran Church - David & Jeanne Greene - Edward & Maxine Guillen -  
Gregory & Patricia Harby - Chris & John Hardesty - Health Source Chiropractic - Leo  
& Dorothy Heath - Roman Hendrickson - James Heuberger - Heritage Bible Church -  
Michael & Kathryn Hogan - Tom & Evonne Holman - Kathy & Randy Hiebert - Hutfles  
Excavation - Ty Inglis - John Kirtley - Lawrence Kostrzewa - Darrell Lalanne - Edwin  
Leipheimer - Chris Major - MAK Charitable Foundation - George & Louellen  
Marinovich - Tracey McCloud - Dennis McConnell - Bill McGladdery - Michael McGlynn  
- McLeod Real Estate Group, LLC - Gary & Sharon L McWhorter - Thomas & Becky  
Miller - David & Juanita Mongar - Morgan Family Foundation - John Morrison -  
Francis Murphy - Northwestern Energy - Mike O`Connell - Bridget O'Neill - Madeline  
Ossello - Otto Bremer Trust - Stephen Packer - Rebecca Papike - Jared & Sharaya  
Payne - Mary Ann Pearce - Thomas Perusich - Jennifer & John Petty - K W Porter -  
Diane Powers - Presbyterian Women - Michael Provost - Roberta Provost - Norma  
Pylypuw - Rahn Grain RLT DTD - Dawna Raiser - Lunde Reed - Judy & Dan Regan -  
Roxanna Reynolds - Rising Sun Auto Repair - Harlan & Karen Rounds - Stephen  
Ruppe - Joshua Russell - Mark & Barbara Russell - Carl & Crystal Rutan - Jillisa  
Salusso - Steve & Joan Salusso - Bruce Schuelke - Nelva Sears - Jeremiah Senner -  
Laurie Shuttlesworth - Paul & Mary Ellen Siddoway - Edward Simonich - Christal and  
Warren Smith - Daniel & Kim Steele - Lester Stone - Wanda Stout - SWMT Community  
Health Center - Daniel Tomlinson - Town Pump Charitable Foundation - Pierce & Erica  
Trey - Tony Trudnowski - Barbara & Robert Tucker - Susan Ueland - David Venema -  
Sue Walsh - Tom Walsh - Fred & Geraldine Walter - Augustus & Joyce Wilkins - David  
& Linda Wing - Wold Livestock - Theodore Wolf & Clara Johnson - Allan Wright -  
Barbara J Zeller